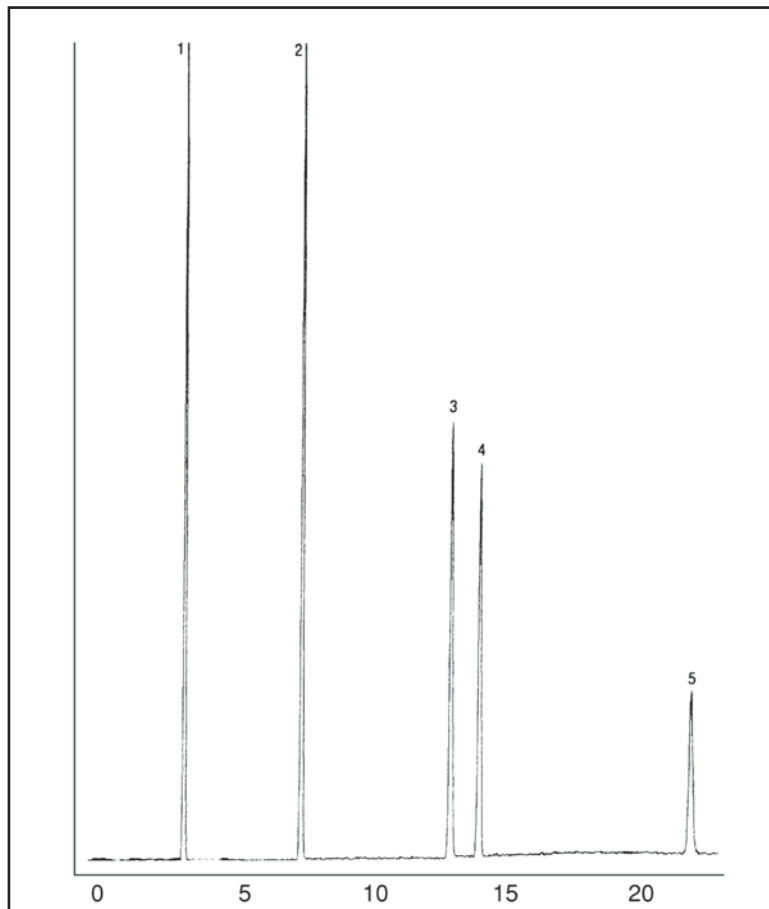


GC CAPILLARY COLUMN APPLICATIONS: CLINICAL/TOXOLOGICAL

Antidepressants

COLUMN: 007-1701,
(14% Cyanopropylphenyl)
Methylpolysiloxane
30M. x 0.25mm I.D. x
0.25µm film
Cat. No.: 007-1701-30-0.25F
Temperature: 120°(20°/min.)
- 200° - (10°/min.) - 290°C
Injector: 250°C
Detector: MSD
Carrier Gas: 31 cm/sec., Helium

1. Glutethimide
2. Methaqualone
3. Diazepam (Valium)
4. Chlorpromazine
5. Flurazepan



PO Box 3881, Woodbridge, CT 06525 • (203) 393-3112 • FAX (203) 393-0391
TOLLFREE: 800-275-7033 • E-MAIL: tech@quadrexcorp.com