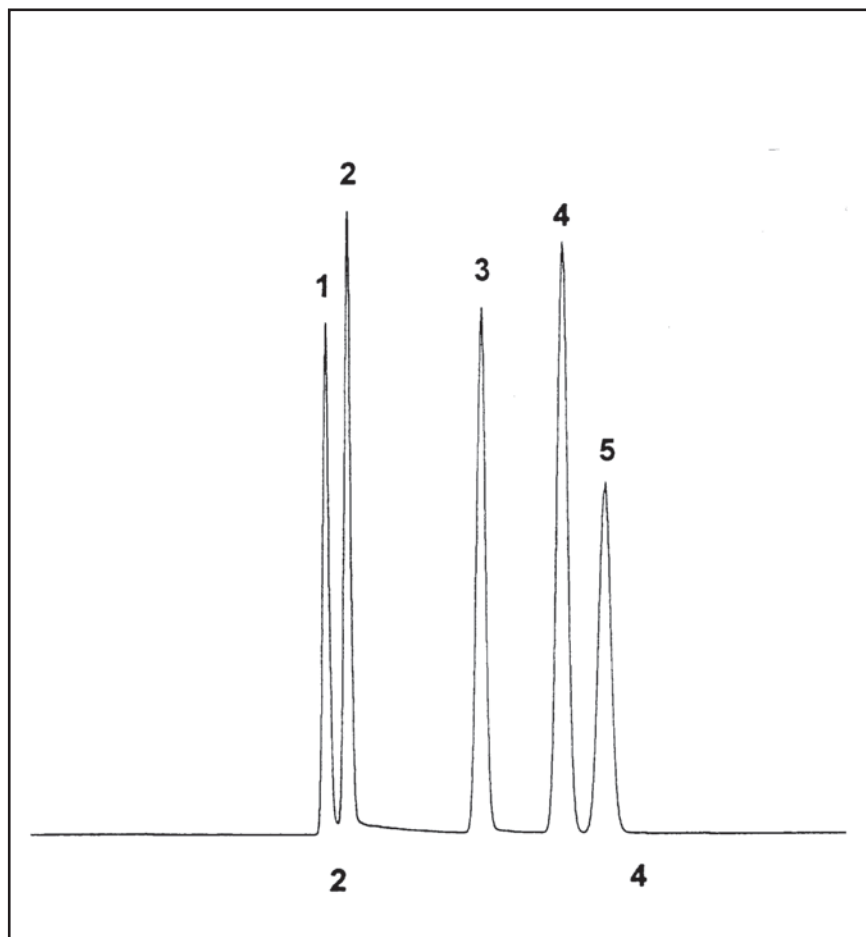


# GC CAPILLARY COLUMN APPLICATIONS: CLINICAL/TOXOLOGICAL

## Blood Alcohols

Column: 007-1, Bonded  
Dimethylpolysiloxane  
30M. x 0.32mm I.D. x  
10.0µm film  
Cat. No.: 007-1-30W-10.0F  
Temperature: 40° (3 min. hold)  
(12°/min.) -200°C  
Injector: 200°C  
Detector: 250°C, FID  
Carrier: 40 cm/sec., Helium

1. acetaldehyde
2. methanol
3. ethanol
4. acetone
5. isopropanol



PO Box 3881, Woodbridge, CT 06525 • (203) 393-3112 • FAX (203) 393-0391  
TOLLFREE: 800-275-7033 • E-MAIL: [tech@quadrexcorp.com](mailto:tech@quadrexcorp.com)