

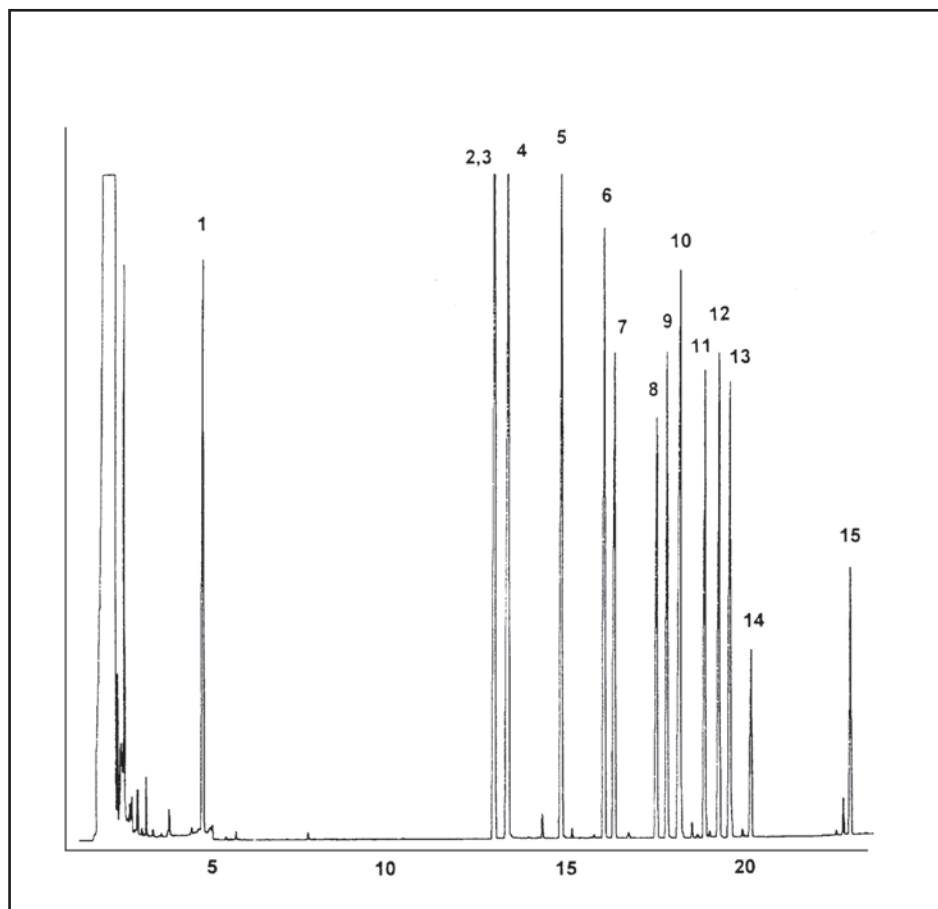
# GC CAPILLARY COLUMN APPLICATIONS: ENVIRONMENTAL

## EPA Method 515

## Herbicides

COLUMN: 007-1301,  
6% Cyanopropyl Phenyl  
Methylpolysiloxane  
30M. x 0.25mm I.D. x  
0.5µm film  
Cat. No.: 007-1301-30-0.5F  
Temperature: 60° (10°/min.) - 300°C  
Injector: 230°C  
Detector: 310°C, ECD  
Carrier Gas: 32 cm/sec., Helium

1. dalapon
2. dichlorobenzoic acid
3. nitrophenol
4. dicamba
5. dichloroprop
6. 2,4 - D
7. picloram
8. bentazon
9. chloramben
10. pentachlorophenol
11. 2,4 - DB
12. 2,4,5 - T
13. dinoseb
14. 2,4,5 - TP
15. acifluorfen



PO Box 3881, Woodbridge, CT 06525 • (203) 393-3112 • FAX (203) 393-0391  
TOLLFREE: 800-275-7033 • E-MAIL: [tech@quadrexcorp.com](mailto:tech@quadrexcorp.com)