

GC CAPILLARY COLUMN APPLICATIONS: ENVIRONMENTAL

EPA Method 601 Standards

COLUMN: 007-624,
Cyanopropyl Phenyl
Methylpolysiloxane
30M. x 0.53mm I.D. x 3.0µm film

Cat. No.: 007-624-30V-3.0F

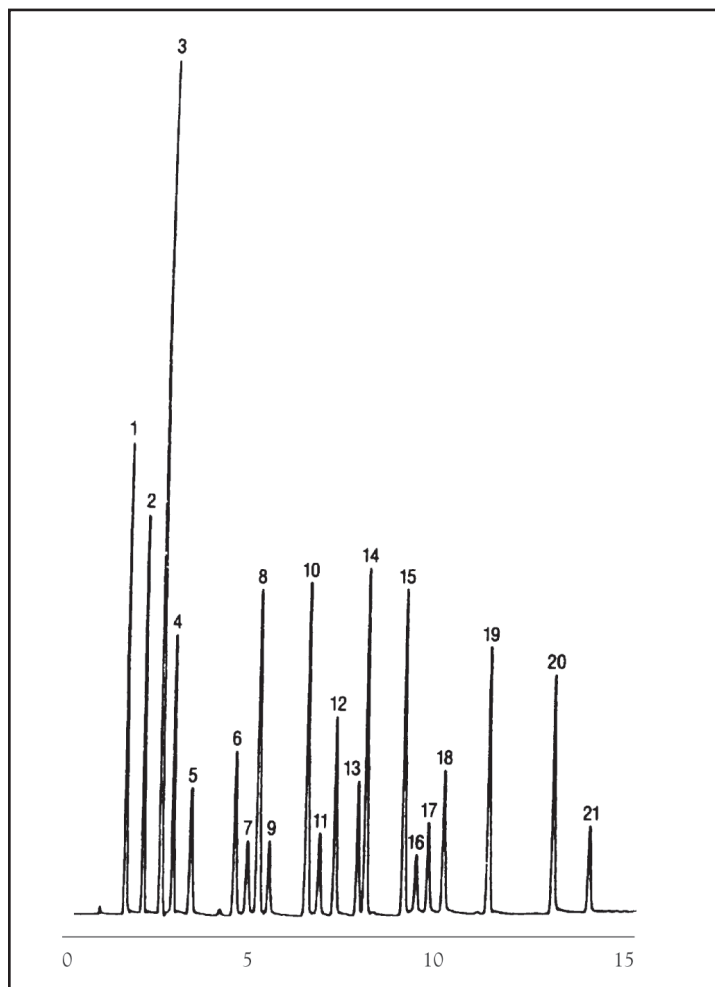
Temperature: 35° (2 min. hold)
(7°/min.) - 125°C

Injector: 220°C

Detector: 300°C, ECD

Carrier Gas: 6 ml/min., Helium

1. trichlorofluoromethane
2. 1,1-dichloroethylene
3. methylene chloride
4. trans 1,2-dichloroethylene
5. 1,1-dichloroethane
6. chloroform
7. 1,1,1-trichloroethane
8. carbon tetrachloride
9. 1,2-dichloroethane
10. trichloroethylene
11. 1,2-dichloropropane
12. bromodichloromethane
13. 2-chloroethylvinyl ether
14. trans 1,3-dichloropropene
15. cis-1,2-dichloropropene
16. 1,1,2-trichloroethene
17. tetrachloroethylene
18. dibromochloromethane
19. chlorobenzene
20. bromoform
21. 1,1,1,2-tetrachloroethane
22. 1,2-dichlorobenzene
23. 1,3-dichlorobenzene
24. 1,4-dichlorobenzene



PO Box 3881, Woodbridge, CT 06525 • (203) 393-3112 • FAX (203) 393-0391
TOLLFREE: 800-275-7033 • E-MAIL: tech@quadrexcorp.com