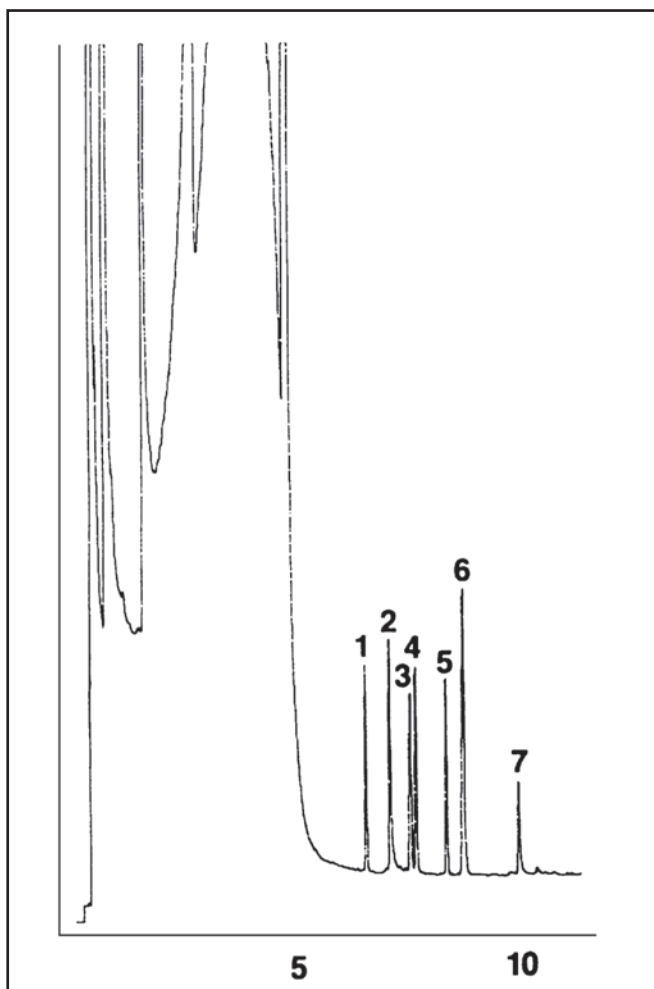


GC CAPILLARY COLUMN APPLICATIONS: FAMES

Monoglycerides TMS Derivatives

COLUMN: 007-23, Bonded Cyanopropyl
Siloxane 8.5M. x 0.25mm I.D. x
0.18 μ m film
Temperature: 80° (20°/min.) -
170°C - (8°/min.) -
230°C
Injector: 225°C
Detector: FID
Carrier Gas: 34cm/sec., Helium

1. monomyristin glycerol
2. monopalmitin glycerol
3. monostearin glycerol
4. monoolein glycerol
5. monoleonolenin glycerol
6. monoecosanin glycerol
7. monoecosatrienin glycerol



PO Box 3881, Woodbridge, CT 06525 • (203) 393-3112 • FAX (203) 393-0391
TOLLFREE: 800-275-7033 • E-MAIL: tech@quadrexcorp.com