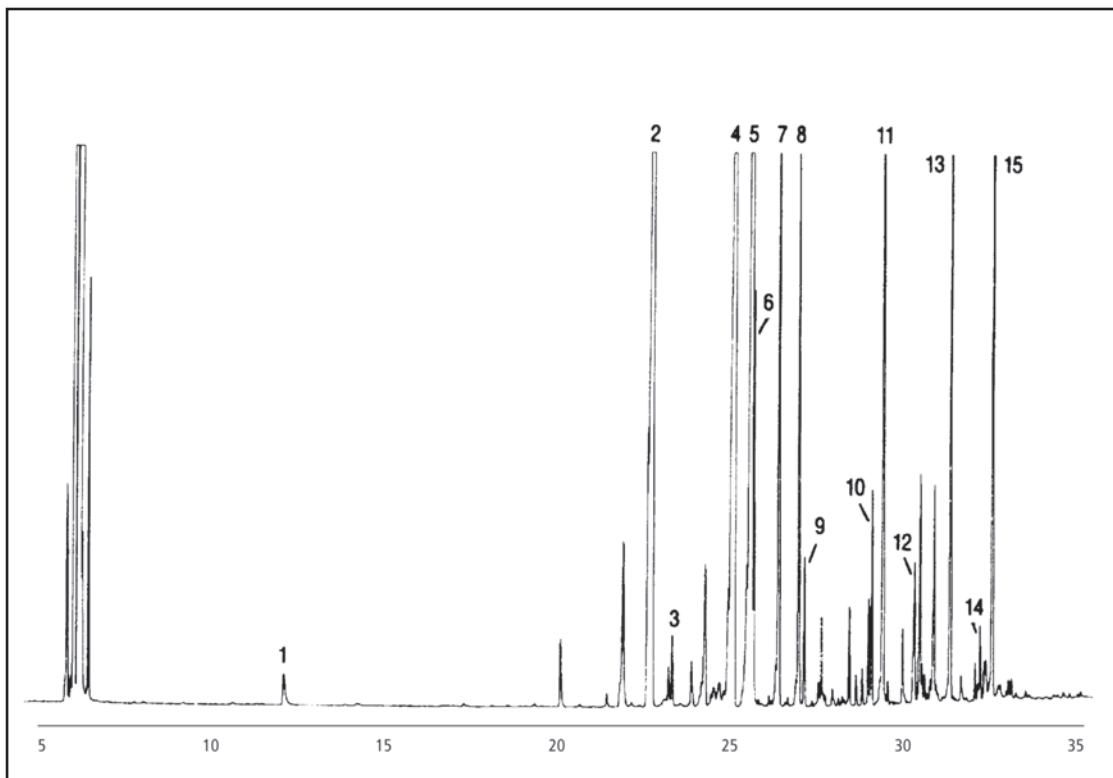


# GC CAPILLARY COLUMN APPLICATIONS: FAMES

## PUFA 2 Animal Source

COLUMN: 007-23, Bonded  
Cyanopropyl  
Polysiloxane  
50M. x 0.25mm I.D. x  
0.25µm film  
Cat. No.: 007-23-50-0.25F  
Temperature: 60° (5°/min.) - 260°C  
Injector: 230°C  
Detector: 300°C, FID  
Carrier Gas: 28 cm/sec., Helium

1. C-14:0
2. C-16:0
3. C-16:1 w7
4. C-18:0
5. C-18:1 w9
6. C-18:1 w7
7. C-18:2 w6
8. C-18:3 w6
9. C-18:3 w9
10. C-20:3 w6
11. C-20:4 w6
12. C-20:5 w3
13. C-22:4 w6
14. C-22:5 w3
15. C-22:6 w



PO Box 3881, Woodbridge, CT 06525 • (203) 393-3112 • FAX (203) 393-0391  
TOLLFREE: 800-275-7033 • E-MAIL: [tech@quadrexcorp.com](mailto:tech@quadrexcorp.com)