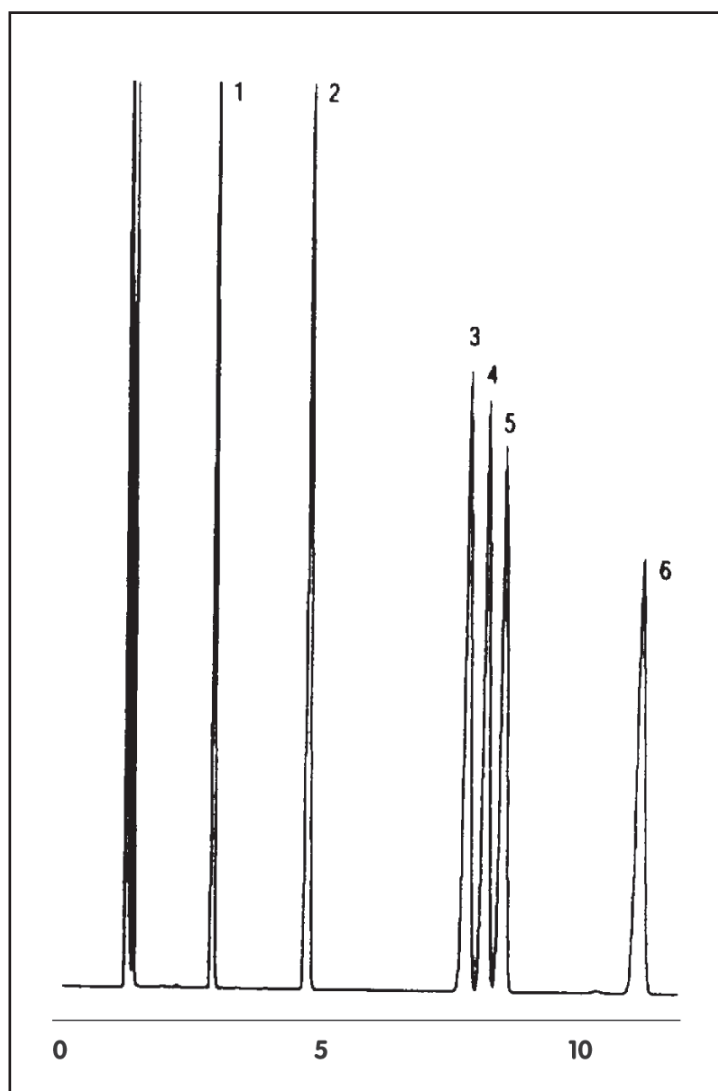


# GC CAPILLARY COLUMN APPLICATIONS: PETROCHEMICAL

## BTEX - Benzenes, Toluene, Xylenes

COLUMN: 007-CW, Bonded Carbowax  
30M. x 0.53mm I.D. x 1.0µm film  
Cat. No.: 007-CW-30V-1.0F  
Temperature: 50°C isothermal  
Injector: 250°C  
Detector: 250°C, FID  
Carrier Gas: 40.0 cm/sec., Helium

1. benzene
2. toluene
3. ethylbenzene
4. p-xylene
5. m-xylene
6. o-xylene



PO Box 3881, Woodbridge, CT 06525 • (203) 393-3112 • FAX (203) 393-0391  
TOLLFREE: 800-275-7033 • E-MAIL: [tech@quadrexcorp.com](mailto:tech@quadrexcorp.com)