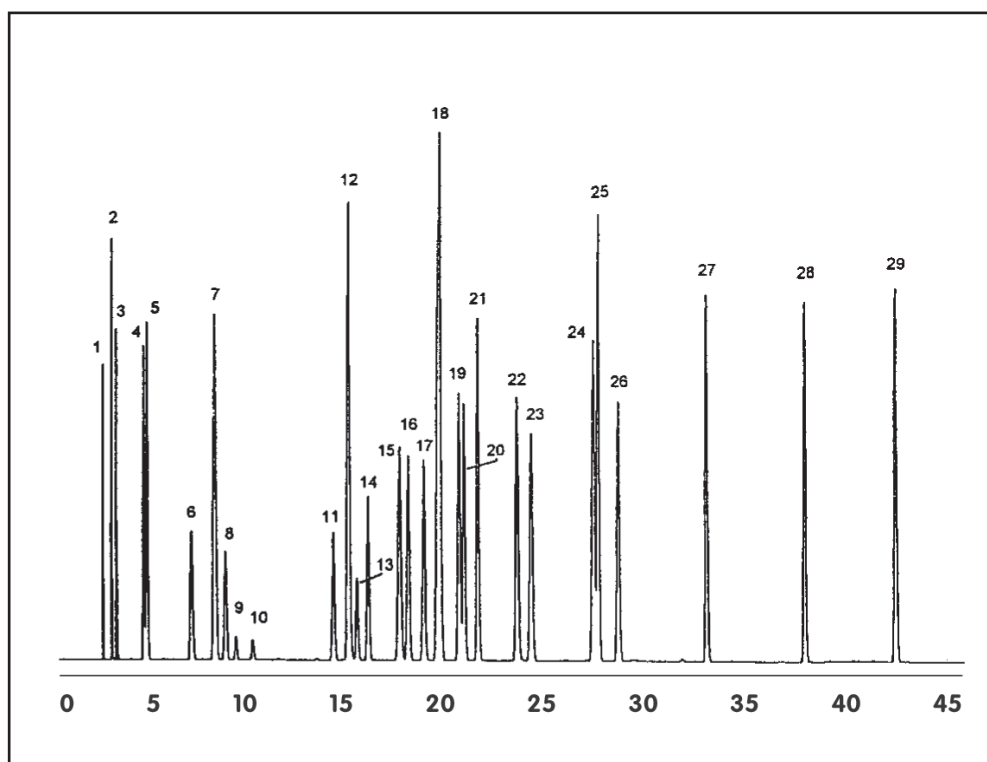


GC CAPILLARY COLUMN APPLICATIONS: PETROCHEMICAL

C1 to C10 Hydrocarbons

COLUMN: 007-1, Dimethylpolysiloxane
PHAT Phase™ 20M. x 0.18mm
I.D. x 6.0µm film
Cat. No.: 007-1-20HS-6.0F
Temperature: 35° (3 min. hold) (2°/min.) -
48° - (6°/min.) - 210°C, hold.
Injector: 200°C
Detector: 280°C, FID
Carrier: 19.0cm/sec., Helium

1. methane
2. ethylene
3. ethane
4. propylene
5. propane
6. isobutane
7. isobutylene & 1-butene
8. butane
9. trans-2-butene
10. cis-2-butene
11. 1-pentene
12. pentane
13. trans-2-pentene
14. cis-2-pentene
15. 2,2-dimethylbutane
16. 3-methyl-1,4-pentadiene
17. 4-methyl-1-pentene
18. 2,3-dimethylbutane
& 2-methylpentane
19. 3-methylpentane
20. 1-hexene
21. hexane
22. 2,4-dimethylpentane
23. 2,2,3-trimethylbutane
24. isooctane
(2,2,4-trimethylpentane)
25. heptane
26. 2,2,4-trimethyl-1-pentene
27. octane
28. nonane
29. decane



PO Box 3881, Woodbridge, CT 06525 • (203) 393-3112 • FAX (203) 393-0391
TOLLFREE: 800-275-7033 • E-MAIL: tech@quadrexcorp.com