

GC CAPILLARY COLUMN APPLICATIONS: PETROCHEMICAL

C1 to C5 Hydrocarbons

COLUMN: 007-1, Bonded
Dimethylpolysiloxane
PHAT Phase™ 30M. x 0.32mm
I.D. x 10.0µm film

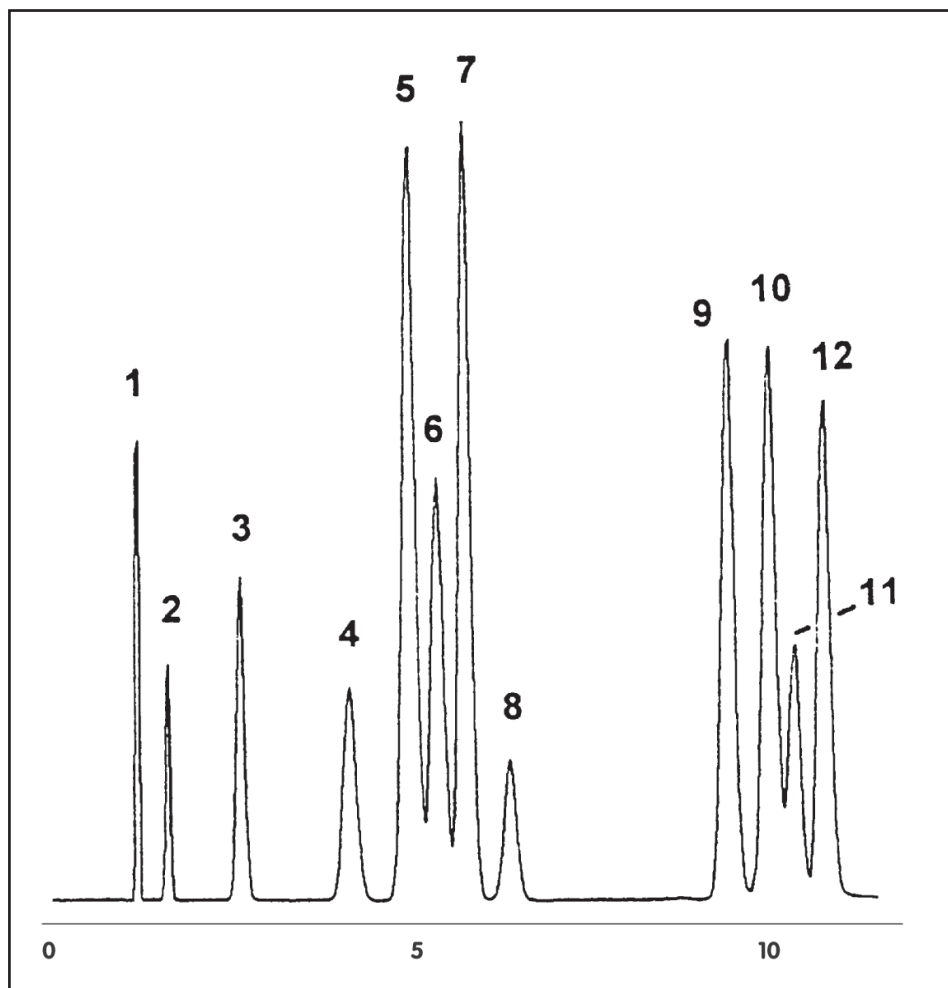
Cat. No.: 007-1-30W-10.0F

Temperature: 35° (3 min hold) (2°/min.) -
45° - (6°/min.) - 100°C

Injector: 150°C

Detector: 250°C, FID

1. methane
2. ethane
3. propane
4. isobutane
5. isobutylene & 1-butene
6. butane
7. trans-2-butene
8. cis-2-butene
9. 1-pentene
10. pentane
11. trans-2-pentene
12. cis-2-pentene



PO Box 3881, Woodbridge, CT 06525 • (203) 393-3112 • FAX (203) 393-0391
TOLLFREE: 800-275-7033 • E-MAIL: tech@quadrexcorp.com