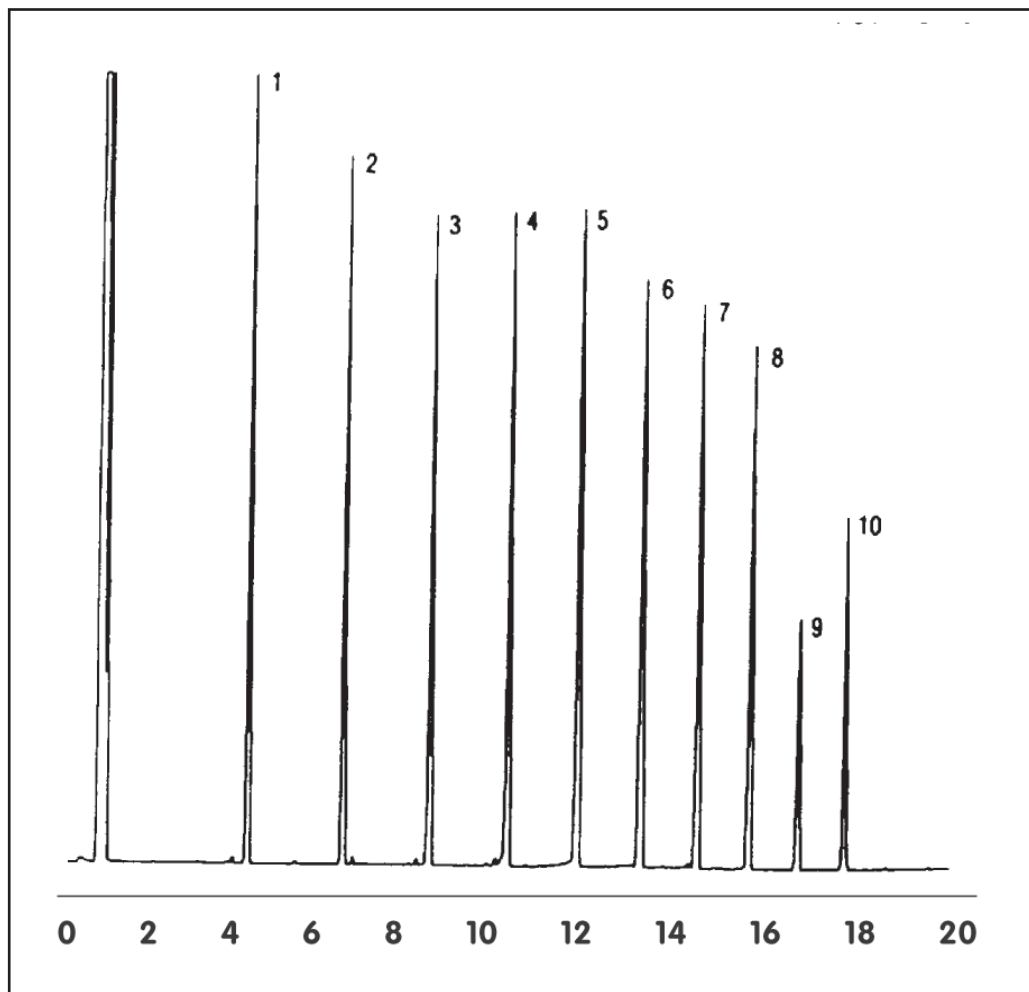


GC CAPILLARY COLUMN APPLICATIONS: PETROCHEMICAL

Determination of Diesel Range Organics (DRO)

COLUMN: 007-1,
Dimethylpolysiloxane
10M. x 0.53mm I.D. x
1.0µm film
Cat. No.: 007-1-10V-1.0F
Temperature: 35° (15°/min.) - 320°C
Injector: 250°C
Detector: 320°C, FID
Carrier Gas: 10 ml/min., Helium

1. C10
2. C12
3. C14
4. C16
5. C18
6. C20
7. C22
8. C24
9. C26
10. C28



PO Box 3881, Woodbridge, CT 06525 • (203) 393-3112 • FAX (203) 393-0391
TOLLFREE: 800-275-7033 • E-MAIL: tech@quadrexcorp.com