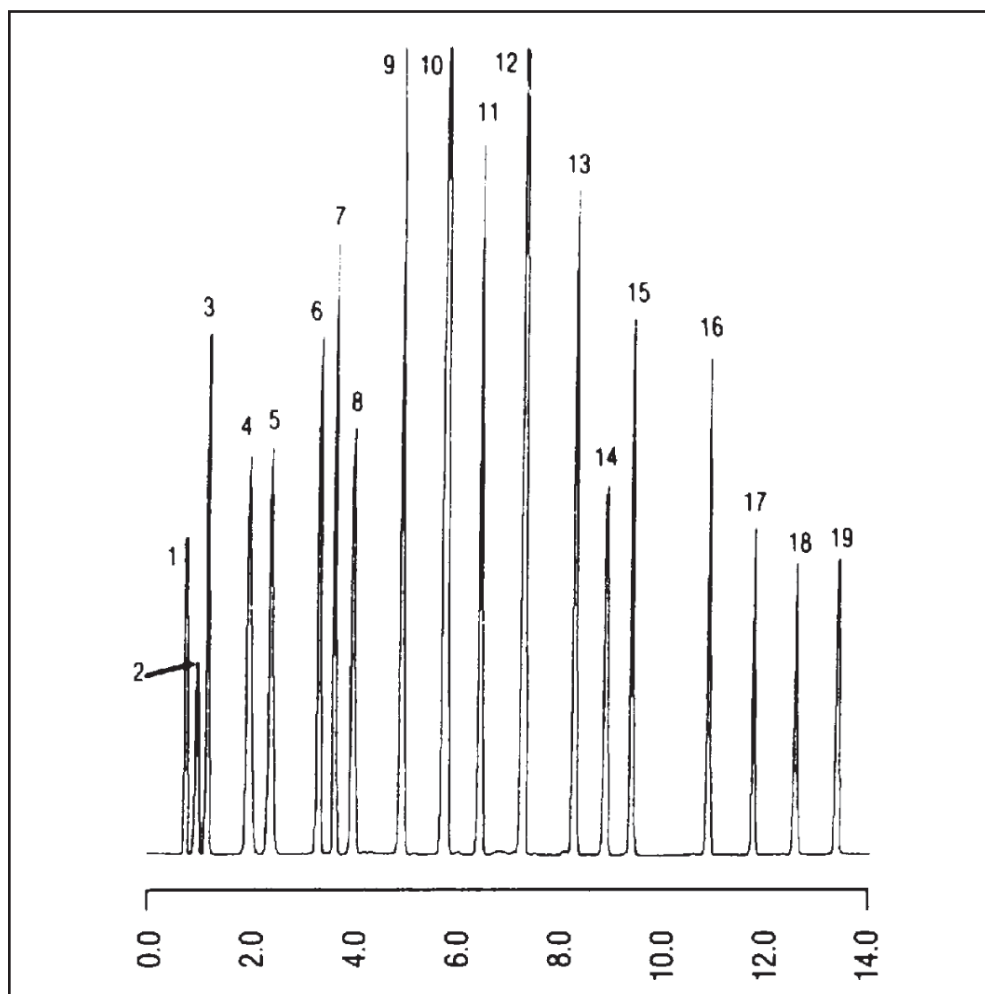


GC CAPILLARY COLUMN APPLICATIONS: PETROCHEMICAL

Qualitative Calibration Mix - ASTM 3710

COLUMN: Qualitative Calibration
Mix - ASTM 3710
Cat. No.: 007-1-10V-5.0F
Temperature: 10° (1.8 min. hold)
(20°/min.) - 210°C hold
Injector: 180°C
Detector: 280°C, FID
Carrier Gas: 10 ml/min., Helium

1. propane
2. 2-methylpropane
3. butane
4. 2-methylbutane
5. pentane
6. 2-methylpentane
7. hexane
8. 2,4-dimethylpentane
9. heptane
10. toluene
11. octane
12. xylene
13. propylbenzene
14. decane
15. butylbenzene
16. dodecane
17. tridecane
18. tetradecane
19. pentadecane



PO Box 3881, Woodbridge, CT 06525 • (203) 393-3112 • FAX (203) 393-0391
TOLLFREE: 800-275-7033 • E-MAIL: tech@quadrexcorp.com