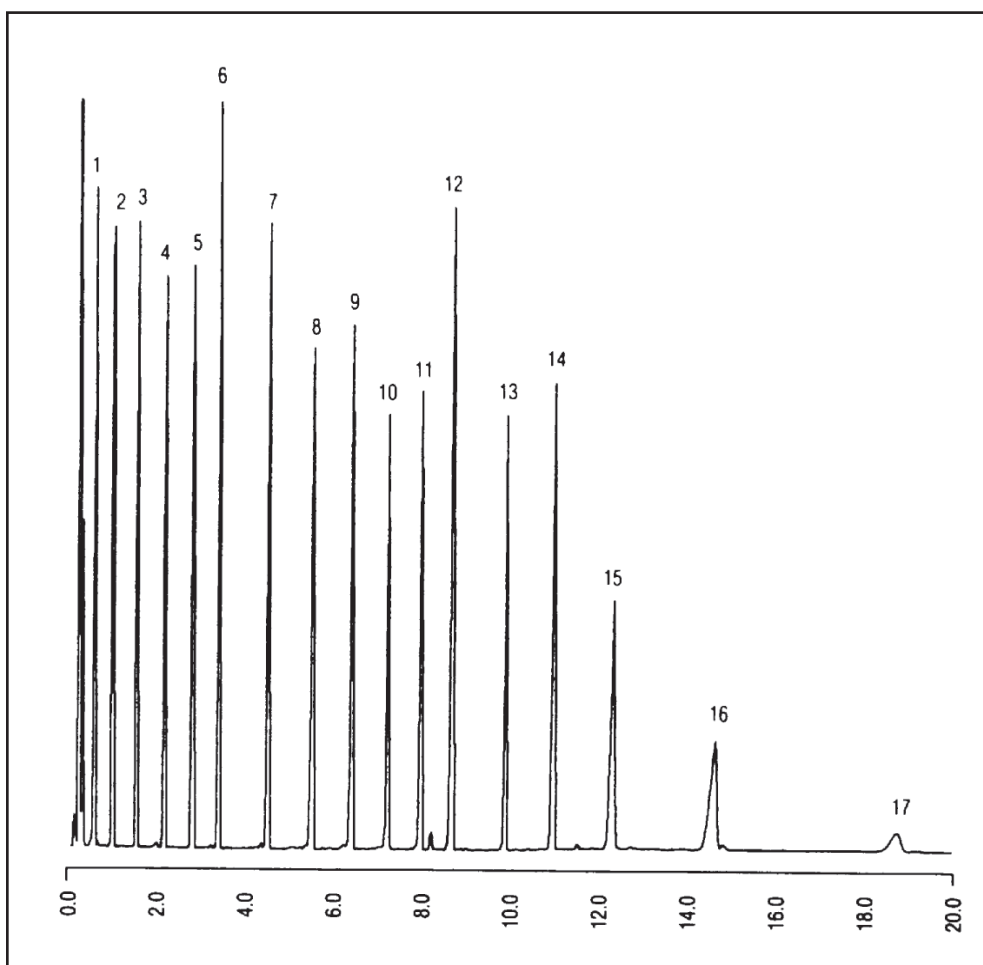


GC CAPILLARY COLUMN APPLICATIONS: PETROCHEMICAL

Sim Dis - ASTM 2887

COLUMN: 007-1,
Dimethylpolysiloxane
10M. x 0.53mm I.D. X
1.0µm film
Cat. No.: 007-1-10V-1.0F
Temperature: 35° (25°/min.) - 320°C
Injector: 350°C
Detector: 350°C, FID
Carrier Gas: 20 ml/min., Helium

1. C6
2. C7
3. C8
4. C9
5. C10
6. C11
7. C12
8. C14
9. C16
10. C18
12. C24
11. C20
13. C28
14. C32
15. C36
16. C40
17. C44



PO Box 3881, Woodbridge, CT 06525 • (203) 393-3112 • FAX (203) 393-0391
TOLLFREE: 800-275-7033 • E-MAIL: tech@quadrexcorp.com