

# GC CAPILLARY COLUMN APPLICATIONS: CLINICAL/TOXOLOGICAL

## Schedule II Depressants

COLUMN: 007-1701,  
(14% Cyanopropylphenyl)  
Methylpolysiloxane  
25M. x 0.25mm I.D. x 0.25µm film

Cat. No.: 007-1701-25-0.25F

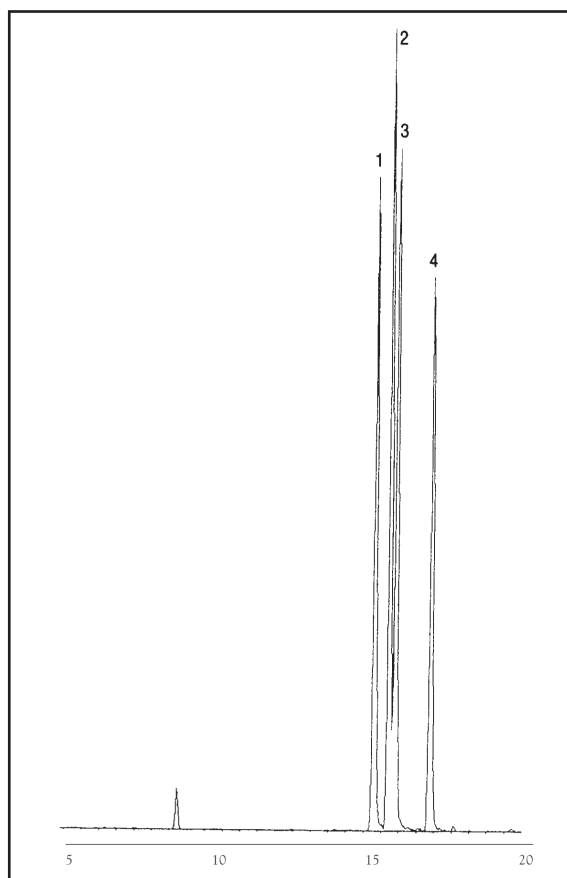
Temperature: 90° (1.5 min. hold)  
(10°/min.) -300°C

Injector: 220°C

Detector: MSD

Carrier Gas: 28 cm/sec., Helium

1. Amobarbital
2. Secobarbital
3. Phencyclidine (PCP)
4. Pentobarbital



PO Box 3881, Woodbridge, CT 06525 • (203) 393-3112 • FAX (203) 393-0391  
TOLLFREE: 800-275-7033 • E-MAIL: [tech@quadrexcorp.com](mailto:tech@quadrexcorp.com)