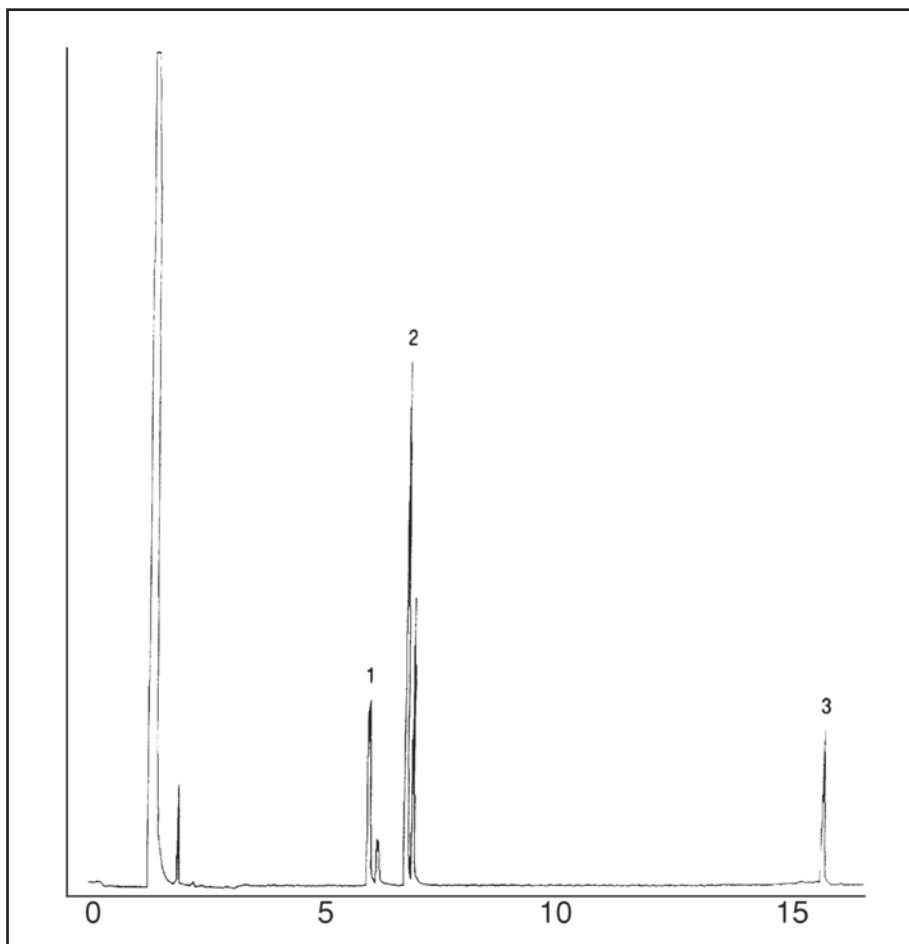


# GC CAPILLARY COLUMN APPLICATIONS: CLINICAL/TOXOLOGICAL

## Schedule II Stimulants

COLUMN: 007-35, (35% Phenyl)  
Methylpolysiloxane  
25M. x 0.25mm I.D. x  
0.25µm film  
Cat. No.: 007-35-25-0.25F  
Temperature: 100° (3.0 min. hold)  
(10°/min.) -280°C  
Injector: 250°C  
Detector: 300°C, FID  
Carrier Gas: 28 cm/sec., Helium

1. D+L-Amphetamine
2. D+L-Methamphetamine
3. Methylphenidate



PO Box 3881, Woodbridge, CT 06525 • (203) 393-3112 • FAX (203) 393-0391  
TOLLFREE: 800-275-7033 • E-MAIL: [tech@quadrexcorp.com](mailto:tech@quadrexcorp.com)