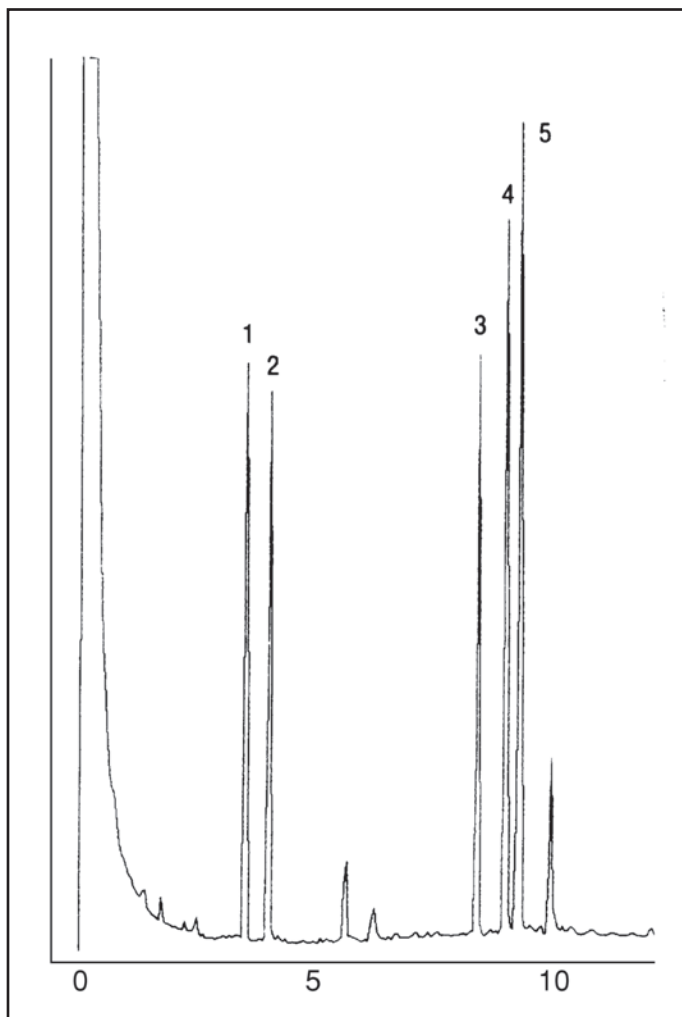


GC CAPILLARY COLUMN APPLICATIONS: CLINICAL/TOXOLOGICAL

Tricyclic Antidepressants

COLUMN: 007-17, (50% Phenyl)
Methylpolysiloxane
25M. x 0.25mm I.D. x 0.25µm film
Cat. No.: 007-17-25-0.25F
Temperature: 220° (2 min. hold) (10°/min.)
-260°C
Injector: 250°C
Detector: 285°C, FID
Carrier Gas: 28 cm/sec., Helium

1. Hydroxyphenamate
2. Meprobamate
3. Nortripyline
4. Imipramine
5. Desipramine



PO Box 3881, Woodbridge, CT 06525 • (203) 393-3112 • FAX (203) 393-0391
TOLLFREE: 800-275-7033 • E-MAIL: tech@quadrexcorp.com